



## Edmunds Precision Inspection and Control

EPIC-CAG

Part Graphics Results

File · Results · Setup · Calibration · Analysis · Diagnostics · Window Help

Part Graphics Gage: G1-54366 Image Layout: Layout 1 Units: Inch

### CONROD PRE HONE - SINGLE BLADE

**Accept**

No	Name	Result
01	CENTER DISTANCE	0.00140
02	CB DIAM X TOP	-0.00088
03	CB DIAM X BTM	-0.00079
04	CB DIAM Y TOP	-0.00079
05	CB DIAM Y BTM	-0.00069
06	CB TAPER	0.00000
07	PB DIAM X TOP	-0.00076
08	PB DIAM X BTM	-0.00077
09	PB DIAM Y TOP	-0.00058
10	PB DIAM Y BTM	-0.00038
11	PB TAPER	-0.00043
12	CB SQUARENESS X	-0.00006
13	CB SQUARENESS Y	-0.00011
14	PB SQUARENESS X	-0.00022
15	PB SQUARENESS Y	-0.00002
16	BEND	0.00090
17	TWIST	0.00007
18	CB PERP TO -D-	0.00017
19	AVG CRK DIAMETER	-0.00079
20	AVG CRK DIAM TRUE	2.19921
21	CRK TAPER X	-0.00014
22	CRK TAPER Y	-0.00014
23	CRANK ROUNDNESS	0.00020
24	AVG PIN DIAMETER	-0.00061
25	PIN TAPER Y	-0.00095
26	PIN ROUNDNESS	0.00042

FIXTURE SEEN FROM FRONT  
BEND + BEND -  
FIXTURE FIXTURE  
BEND 0.00090

FIXTURE SEEN FROM LEFT  
TWIST LEFT + TWIST RIGHT -  
PIN BORE CRANK BORE CRANK BORE PIN BORE  
FIXTURE FIXTURE  
TWIST 0.00007

FORGING NUMBERS DOWN

Display Mode: Last Part Gaged

G1 Accept Idle 8:36



Edmunds Gages introduces EPIC-CAG, the newest generation of multi-dimensional computer aided gaging, featuring modular components to integrate the most complex gaging applications into the manufacturing process.

## POWERFUL

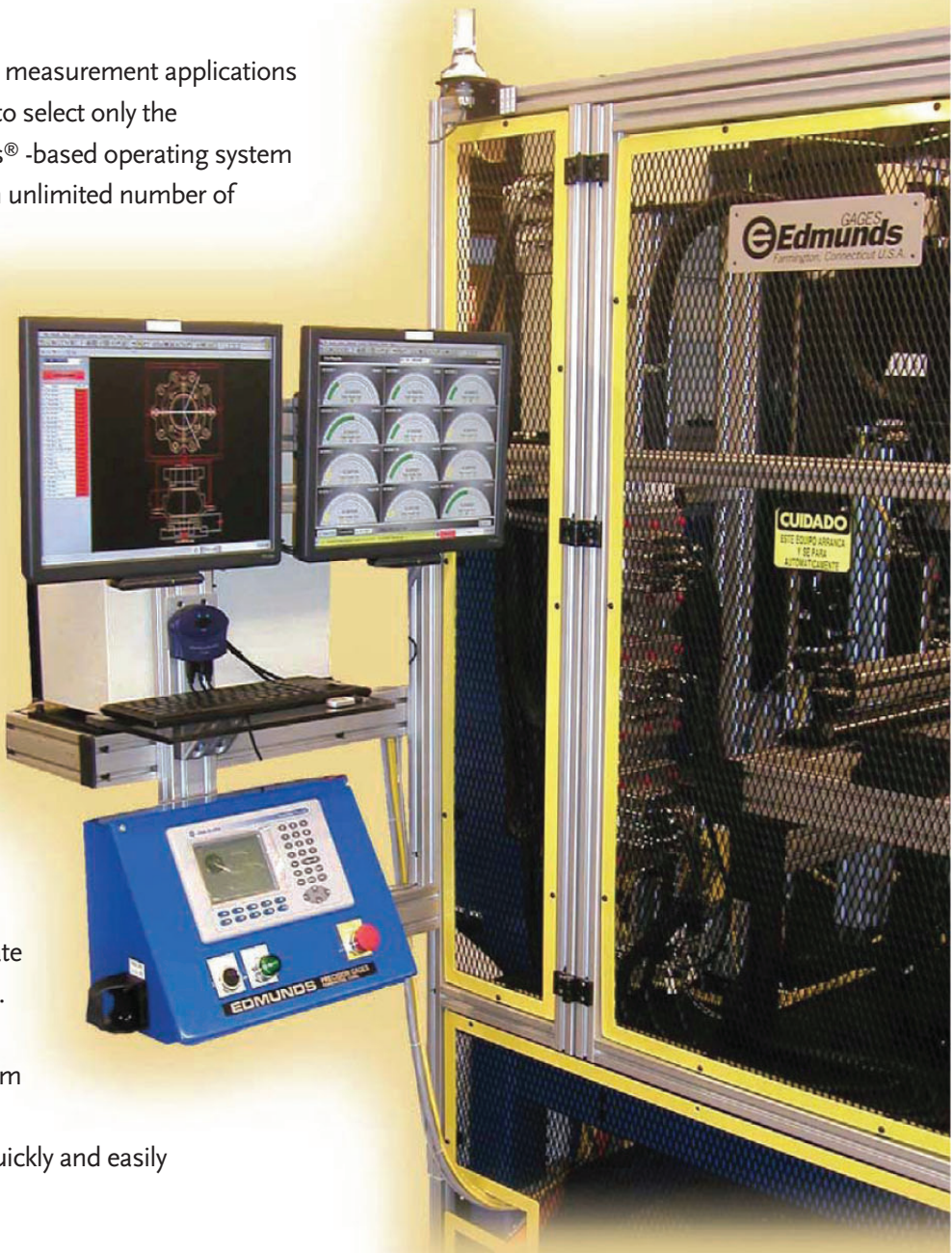
EPIC-CAG combines all the multi-dimensional measurement applications you can imagine, with the economic flexibility to select only the components you need. The powerful Windows® -based operating system enables EPIC-CAG to manipulate data from an unlimited number of inputs and display results in multiple formats. Once captured, EPIC-CAG transmits the data directly to production machines, cell controlled software or the customer's in-house network. The real-time data allows for automatic adjustments and compensations, linking inspection control directly with the manufacturing process.

## VERSATILE

EPIC-CAG quickly and accurately analyzes, displays and communicates measurement data from Edmunds' LVDT probes, temperature probes, air-to-electronic transducer gaging medians. Intuitive graphic options and multi-screen viewing allow the user to choose the appropriate graphic formats suited to the process function. With the integrated AutoCAD based graphic package, users have the option to create custom graphic display screens or, with the sequential photographic prompting module, users can quickly and easily decipher errors and their locations.

## FLEXIBLE

EPIC-CAG's modular design allows you to customize the components to fit your needs and your operations. The flexibility of the system permits you to add components as your business changes, ensuring you are investing in the applications you need, when you need them.



*EPIC-CAG arranged as a dual system automatic gage.*

# EPIC-CAG Advantages

**Unlimited Signal Conditioning** - from Edmunds air, LVDT, or temperature transducers, beginning at, and expanding by multiples of four.

**Size Compensation** - to one or multiple machine tools, in a variety of formats.

**Temperature Compensation** - making all measurements look like 68° F.

**Serial Inputs** - capabilities to accept inputs from other devices.

**Size Verification** - automated routines to confirm gage operation without calibration or mastering.

**Sort Classification** - identify measurement results by number, letter, name, or from your designation.

**Dynamic Interruption Adjustment** - erase or ignore keyways, holes or protrusions during dynamic rotation measurement using programmable variables.

**Expanded Mathematics Functions** - use any higher math operator like  $y^2$ , sin, cos, tan, in addition to add, subtract, multiply and divide, to create measurement algorithms.

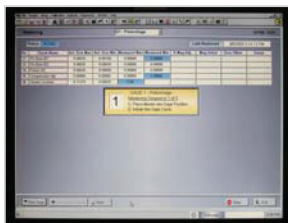
**AIAG GR&R** - software to report the repeatability and reproducibility of your gaging hardware is standard within the software.

**Sequential Photo Prompting** - create photographic work instructions to inform users where to measure which features of a part, and with what tool.



*EPIC-CAG configured as an inspection station.*

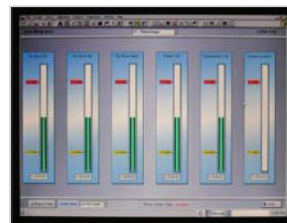
## A Sampling of EPIC-CAG's Numerous Displays



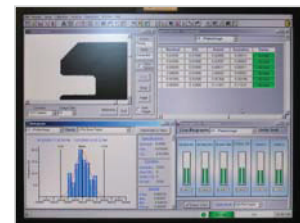
*Automatic mastering prompts the user through the calibration.*



*Multi-window display arranged by the user's preference.*



*A variety of results displayed like bar graphs.*



*Precision Vision camera images on screen.*

## EPIC-CAG

Basic CPU and Signal Conditioning Enclosure

10.9" H x 16.0" W x 9.88" D

- (1) Ethernet Port
- (4) Serial Ports
- (2) Com Ports
- (1) VGA Port
- (1) I/O Port

15" Flat Panel Glass-Film-Glass GFG Display

Optional wireless USB Mouse

### **Expandable Hardware and Software Modules**

- Serial Feedback
- FOCAS II Feedback
- Parallel I/O Feedback
- BCD Feedback
- +/- Pulse Feedback
- Temperature Compensation
- Remote Monitor(s)
- Expandable Signal Conditioning
- Custom Sort Classes
- Zero Verification Automation
- Dynamic Interruption Adjustment
- Sequential Photo Prompting
- Unlimited Check Quantity

### **EPIC-CAG TOUCH Models:**

Manual unit #7961021TM

Auto Unit w/120VAC interface #7961021TAAC

Auto Unit w/24VDC interface #7961021TADC

4-channel signal conditioning card #7960300

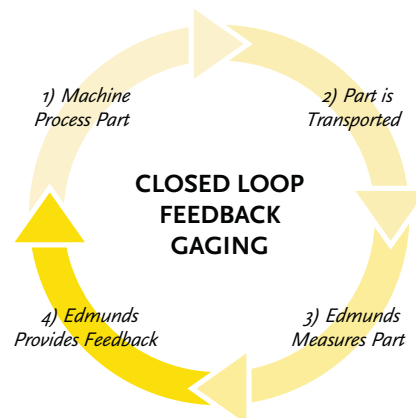


*Typical EPIC-CAG side panel with 4-channel signal conditional cards.*

## SOPHISTICATED MODULES

When temperature consistency is critical to production accuracy, Edmunds' **Temperature Compensation** module is a vital component for measurement correlation at 68° F. This module actually characterizes the gage, part and masters through your expected temperature range to assure results.

Edmunds Gages, the leader in versatile modules, is best known for our ability to provide **Machine Tool Feedback**, to close the loop between process variation and the next piece being manufactured. Our size compensation routines adjust from a cold start to a running mode with varying rate of compensation based upon the process reaction. Available in parallel I/O, BCD pulse, serial or Ethernet protocols, or we will create a new one, based on your specific machine's requirements.



45 Spring Lane  
Farmington, CT USA 06032  
TEL (860) 677-2813  
FAX (860) 677-4243  
www.edmundsgages.com